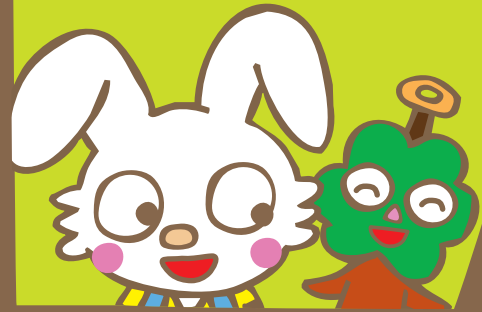


Prof. Daily's Fun School

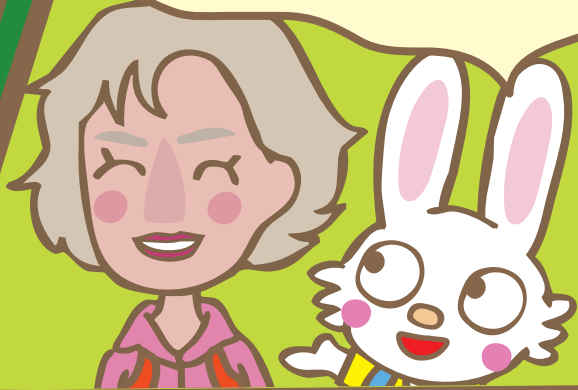
Third Issue, December 2019



I'm Gring.
This is my friend Woodin.
We are working to protect
the Earth's environment.



We've come to a forest
in Germany with
Professor Daily today.



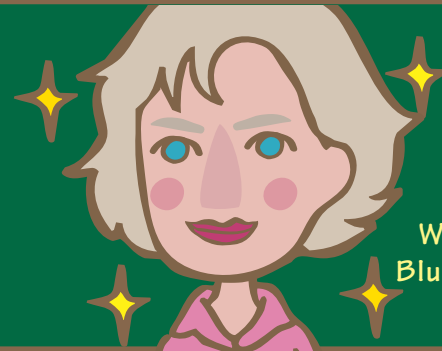
The leaves are
so green, and
they make us
feel happy and calm.



Yes.
Green is
a color that
is restful to
the eyes and
makes us
relaxed.



Professor Daily
has been active
around the world
in protecting nature.



2017
Winner of the
Blue Planet Prize

When the professor was a child,
she lived in Germany near this forest.

I used to love
to cycle in
this forest.



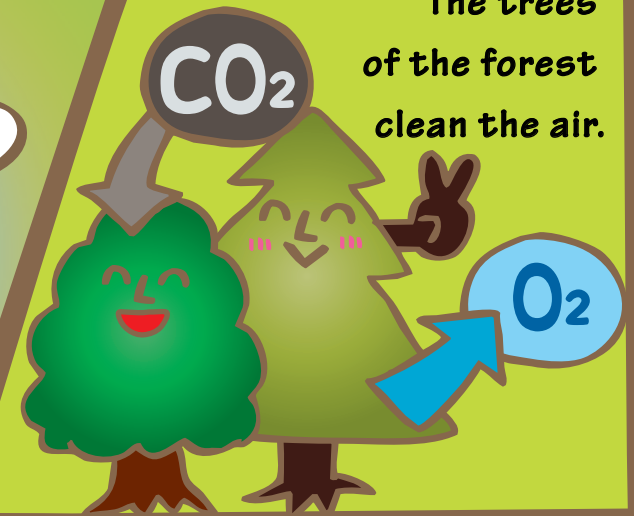
This is a
nice forest!



The air is
refreshing, too.



The trees
of the forest
clean the air.



This tree and that one
look quite different.



A forest with
different types of trees is
a rich forest.





Look!
A hare!

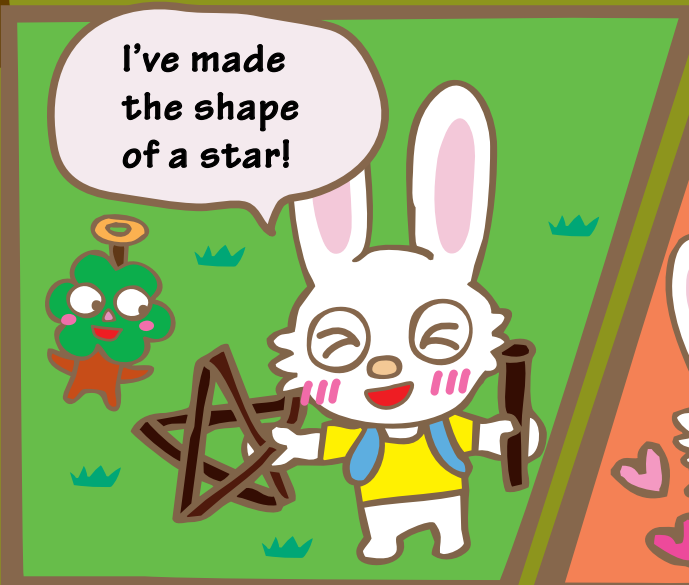
A forest
accommodates
many kinds
of animals.



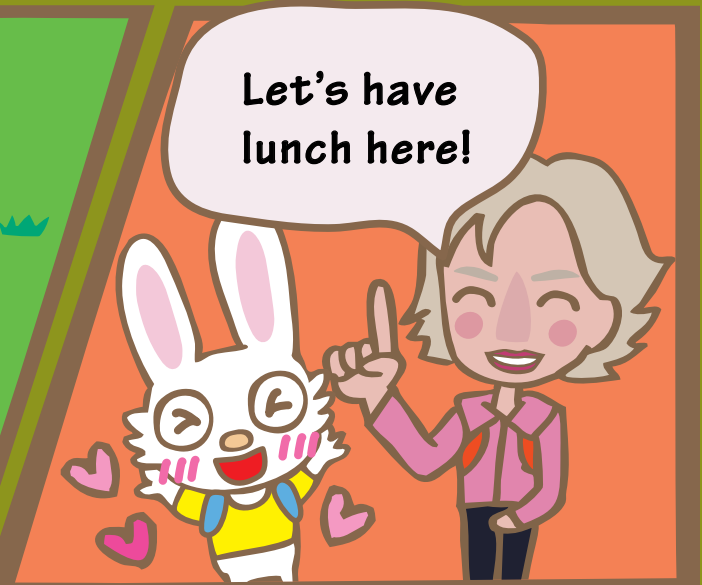
Wood is a material for
buildings and furniture.



You can pick up
branches and play
with them.



I've made
the shape
of a star!



Let's have
lunch here!



These people cut down trees
and carry them away.



Lunch in the forest
tastes even better
than usual.
The forest is
magical.

Actually, this forest has not always been rich.



German people used to live together with the forest in ancient times.



Acid rain started to fall, which killed the trees.

Acid rain: An unusually acidic rain, which damages forests, lakes, and also buildings.



Then, many people stood up to protect the forest. I also wanted to do something for nature, and that is why I became a biologist.



The famous Grimm's Fairy Tales, such as "Hansel and Gretel" and "Sleeping Beauty" were born because of the German forests.



But at one time, people started to cut down too many trees and plant trees of the same kind.



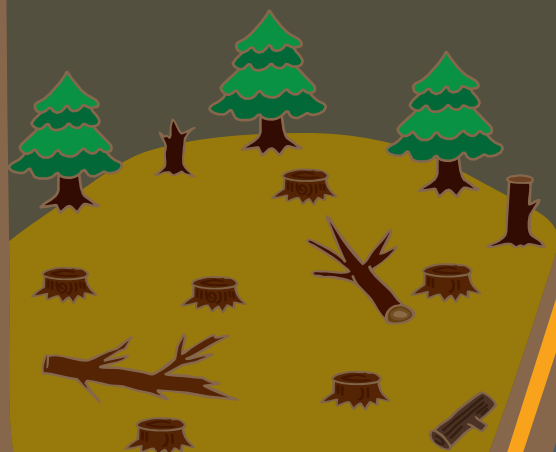
Currently, we reduce the number of trees cut down, and plant many kinds of trees.



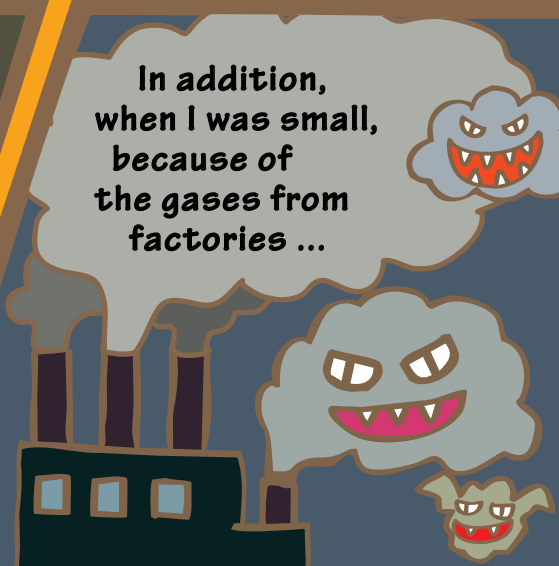
German people are working hard to keep the forest rich forever.



Which led to forest destruction.



In addition, when I was small, because of the gases from factories ...



There are professional foresters who care for the forest.



Sometimes, human intervention can restore a rich natural environment.



