

Prof. Lambin's Fun School

Seventh issue, November 2020





When Gring and Woodin were flying a kite.



The views from high up are exciting.

Would you like to see the view from a much higher place?

Professor Eric Lambin, a geographer studying the relationship between humans and land



2019 Winner of the Blue Planet Prize

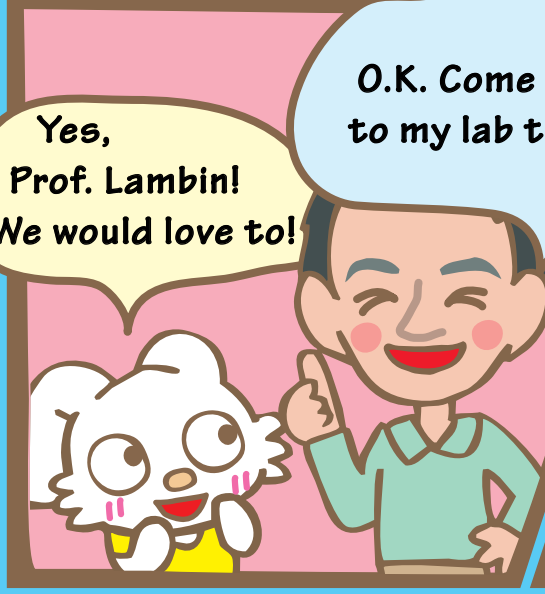


The kite was blown away by the wind.

Oh my!

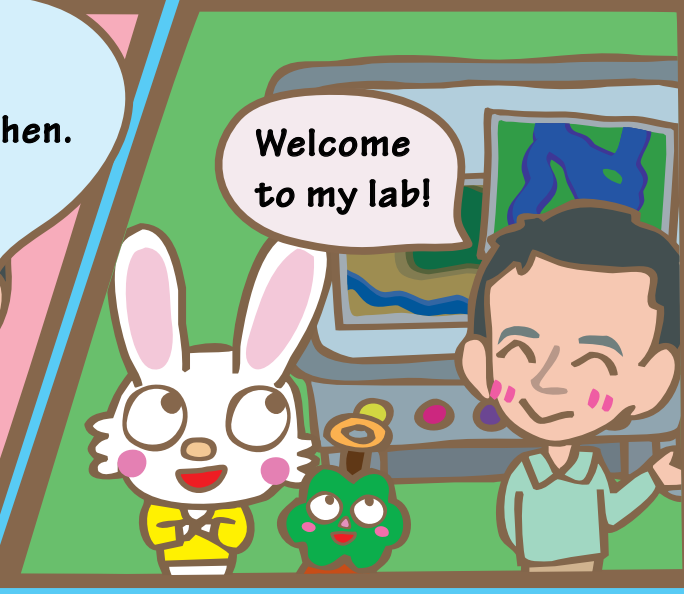


There is my kite.



Yes, Prof. Lambin! We would love to!

O.K. Come to my lab then.



Welcome to my lab!

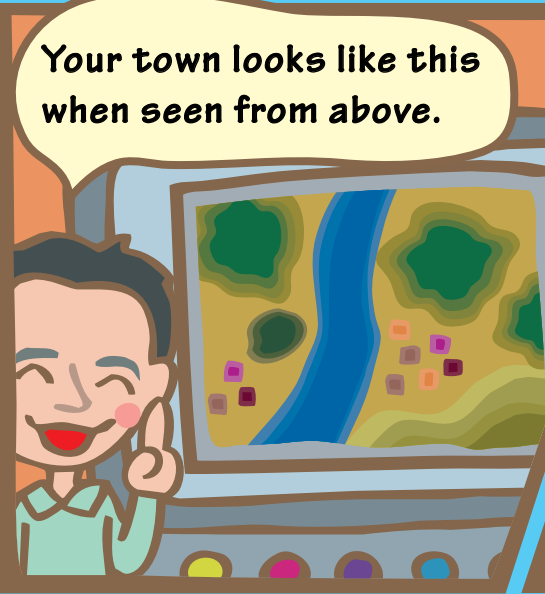


It went to a very high place.

It certainly did.



I can see a river!



Your town looks like this when seen from above.



Is this a view from an airplane?

-Answer-

The desk, shelves, building blocks, pencils, books, posters, etc.

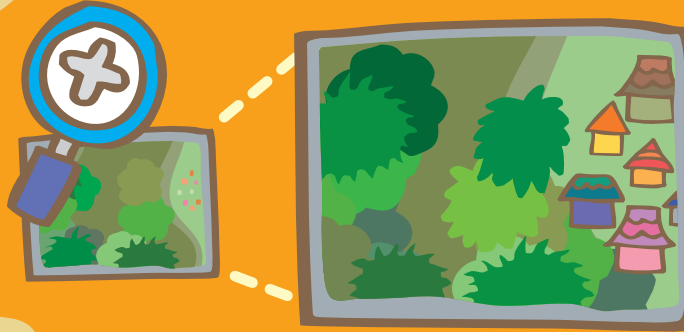
So many of them!



You see, trees are used to make many items —furniture, toys, stationery, paper, and so on.



Looks like we can find a clue here.



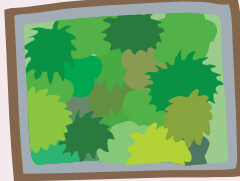
Let's get closer!

Why don't we go and find out?

Do people live there?



Trees used for making this desk were brought from the rain forest you just saw in the picture.



Look! This image can change.

Beep!

Wow! The forest turned red!



Satellite images tell us a lot of things. But there are things you can understand only by going there.

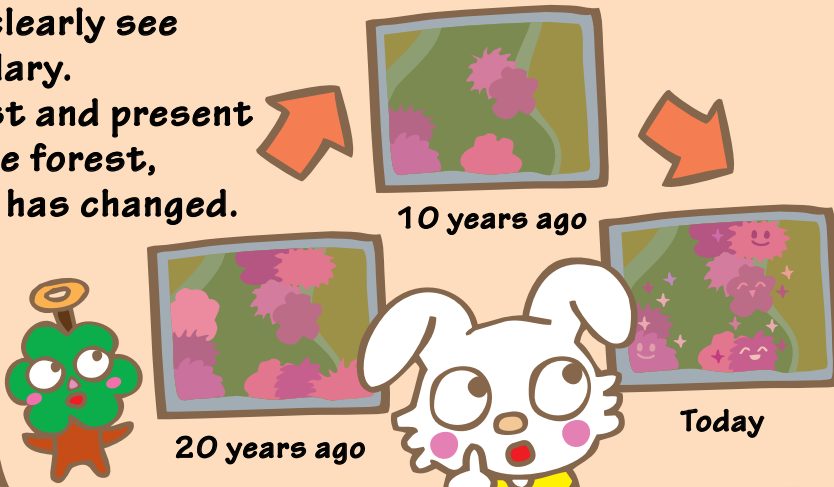


Let's go!



This way, you can clearly see the forest's boundary. Comparing the past and present images of the same forest, you can see how it has changed.

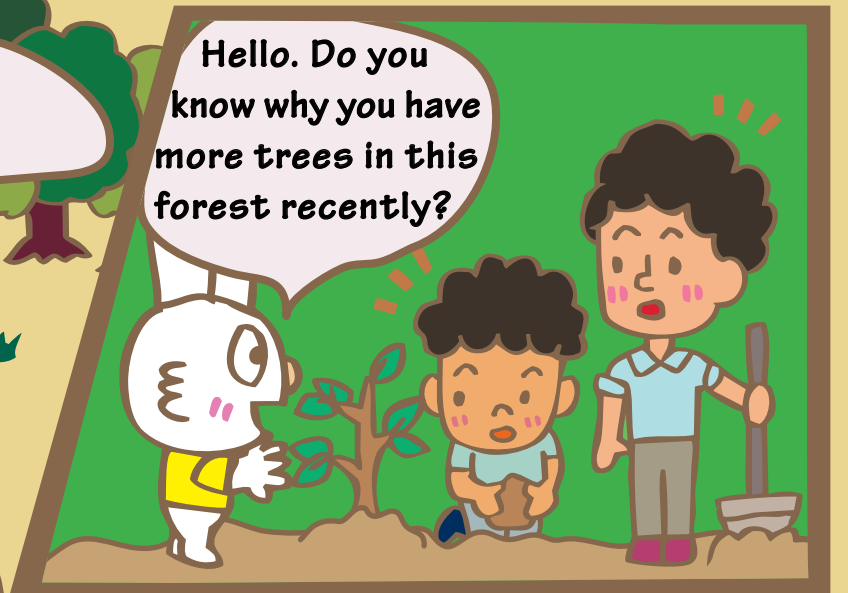
The number of trees in the forest decreased in the past and are now increasing. Why is that?



Let's ask them about this forest.



Hello. Do you know why you have more trees in this forest recently?



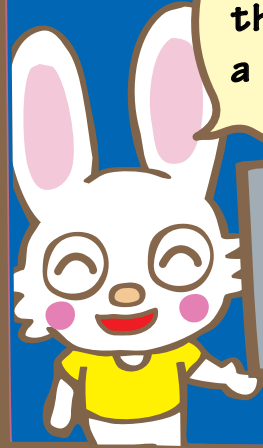
We used to cut down many trees in the forest to make wooden furniture for foreign countries; and the trees decreased in number.



But today we do not only cut down trees; we also plant new trees. That's why we have more trees recently.



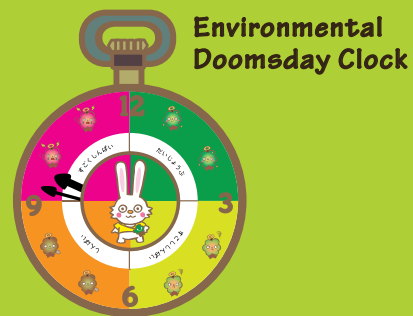
I see. That's why the images showed a bigger forest!



Humans impact nature and you can see it from outer space. We must use natural resources with great care. Right?



Thank you very much, Prof. Lambin.



Environmental Doomsday Clock
Prof. Lambin's Fun School
November 2020
THE ASAHI GLASS FOUNDATION