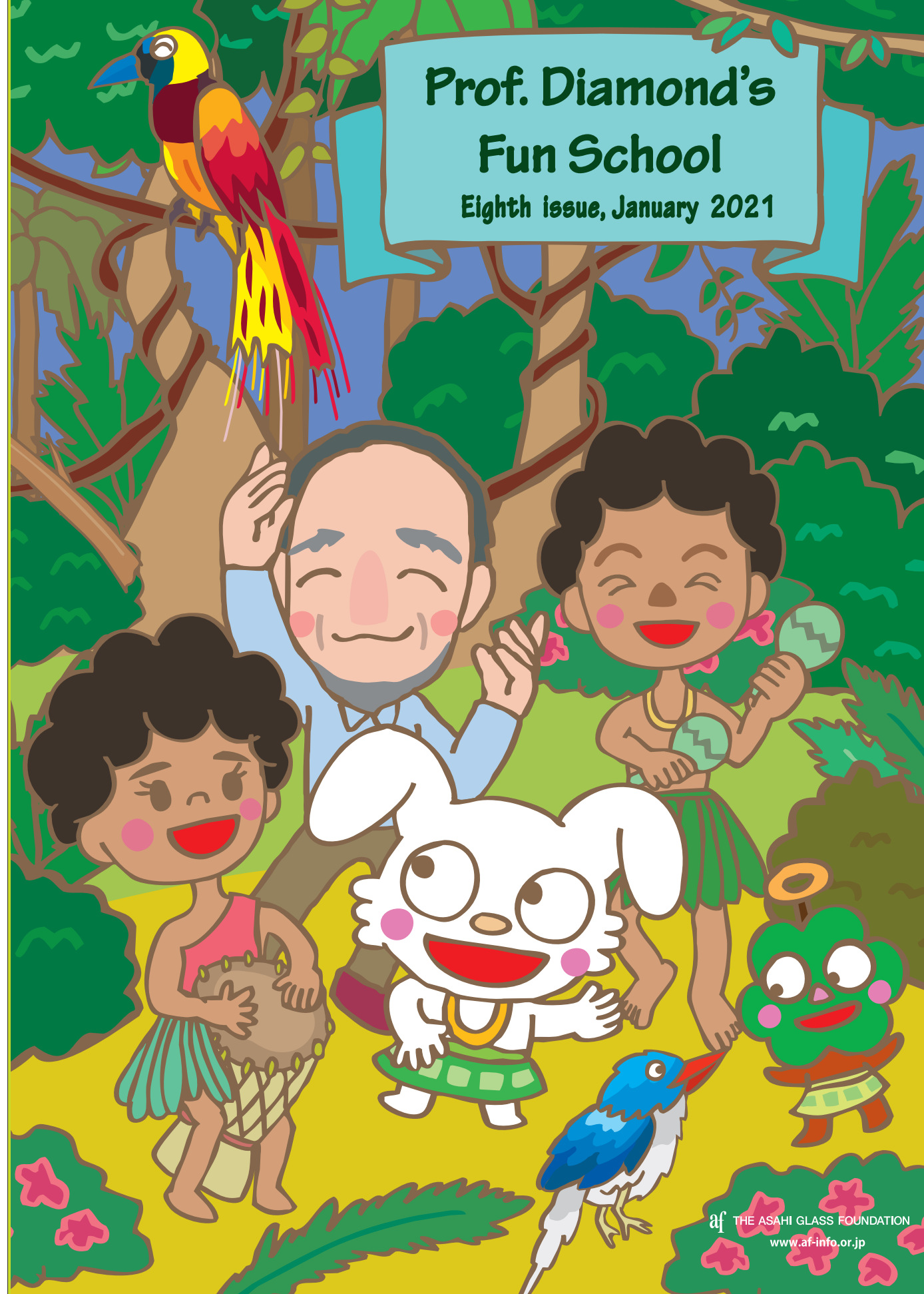


Prof. Diamond's Fun School

Eighth issue, January 2021



Gring and Woodin have come to visit New Guinea with Professor Diamond.

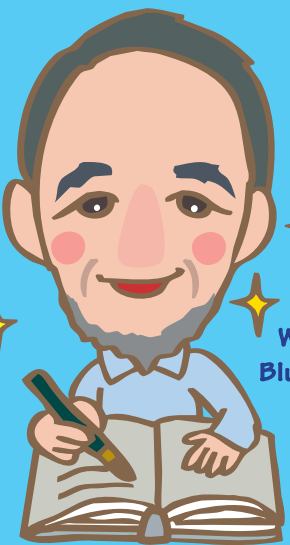


New Guinea is a tropical island in the southern Pacific, abundant with nature.

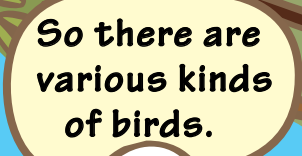
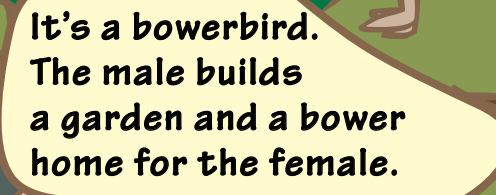
Most of the island is covered with jungle, but there are high mountain ranges in the middle and even glaciers.



Professor Diamond has been visiting New Guinea for over 50 years, studying the birds, geography, and the history of the island. He is also a writer, and his books have become bestsellers around the world.



2019 Winner of the Blue Planet Prize



New Guinea is home to many birds! There are as many as **600** different species!



Look!
There's
a village!

I've hunted
this animal for dinner.



How did you
catch it?

With a bow
and arrow.
I made them
myself.

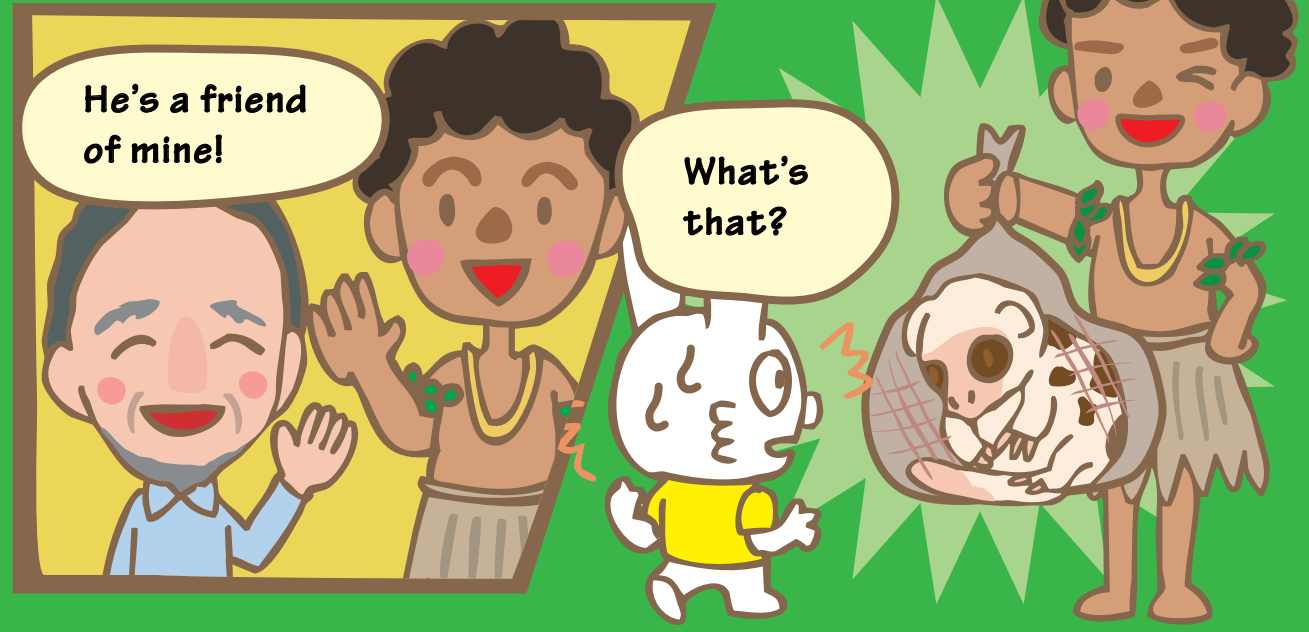


Did you!
Cool!



You buy tools and food
at stores.

But people living here
make tools themselves
with material they find in nature.
They also get food from nature.



He's a friend
of mine!

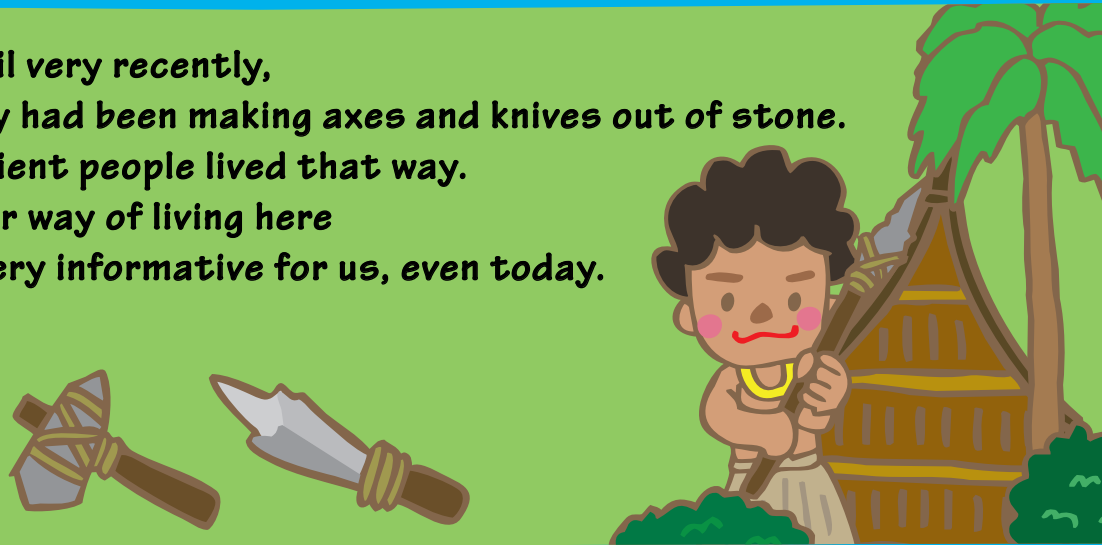
What's
that?



We built this house
with palm leaves and
tree trunks, together
with villagers.

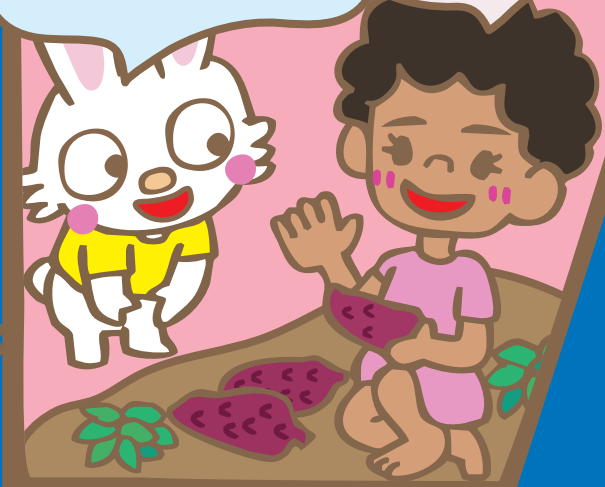
You built it
yourselves, too?
That's amazing.

Until very recently, they had been making axes and knives out of stone. Ancient people lived that way. Their way of living here is very informative for us, even today.



What are you harvesting?

Sweet potatoes.



For certain reasons, they plow fields in a traditional way.



Let's go to a village high up in the mountains.



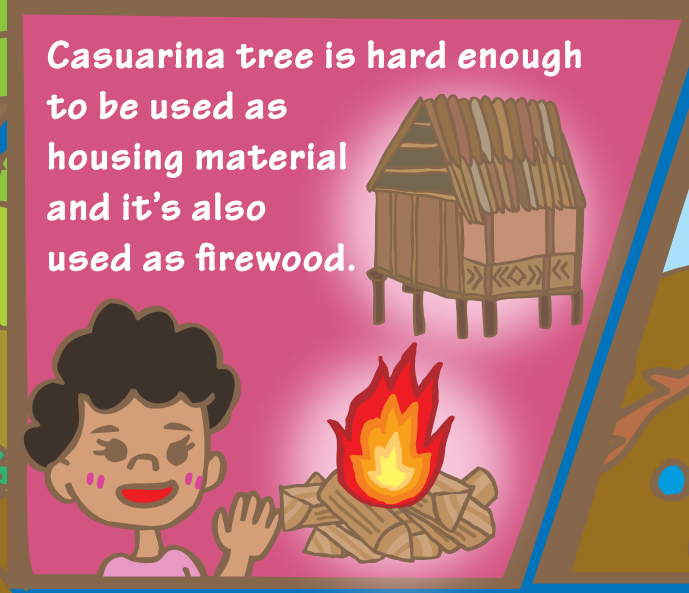
Planting casuarina trees near sweet potatoes



makes the soil richer, helping them grow well.



Casuarina tree is hard enough to be used as housing material and it's also used as firewood.



Its roots also prevent soil from being washed away by rain.



Perhaps long time ago, when they made new fields, the soil may have been carried away or become sterile. But they realized that planting casuarina trees would make things work better.



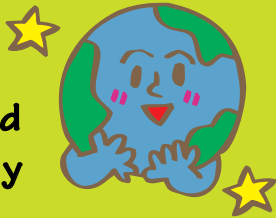
That's why they keep living in the same traditional way.



They've been able to live here for thousands of years, because they noticed the problem and found a way to prevent it before it was too late.



The same is true for environmental problems. By learning from history and devising a way, we can surely resolve these problems.



Environmental Doomsday Clock Prof. Diamond's Fun School January 2021 THE ASAHI GLASS FOUNDATION